

SIGNATURE
REINALDO A. GOMEZ
AR0013736

CONSULTANTS :

REINALDO A. GOMEZ
AR0013736
02/23/2024

REINALDO A. GOMEZ
AR0013736
02/23/2024

RIVERSIDE TOWNHOMES
1300 N RIVERSIDE DR.
POMPANO BEACH, FL 33062

REVISIONS:

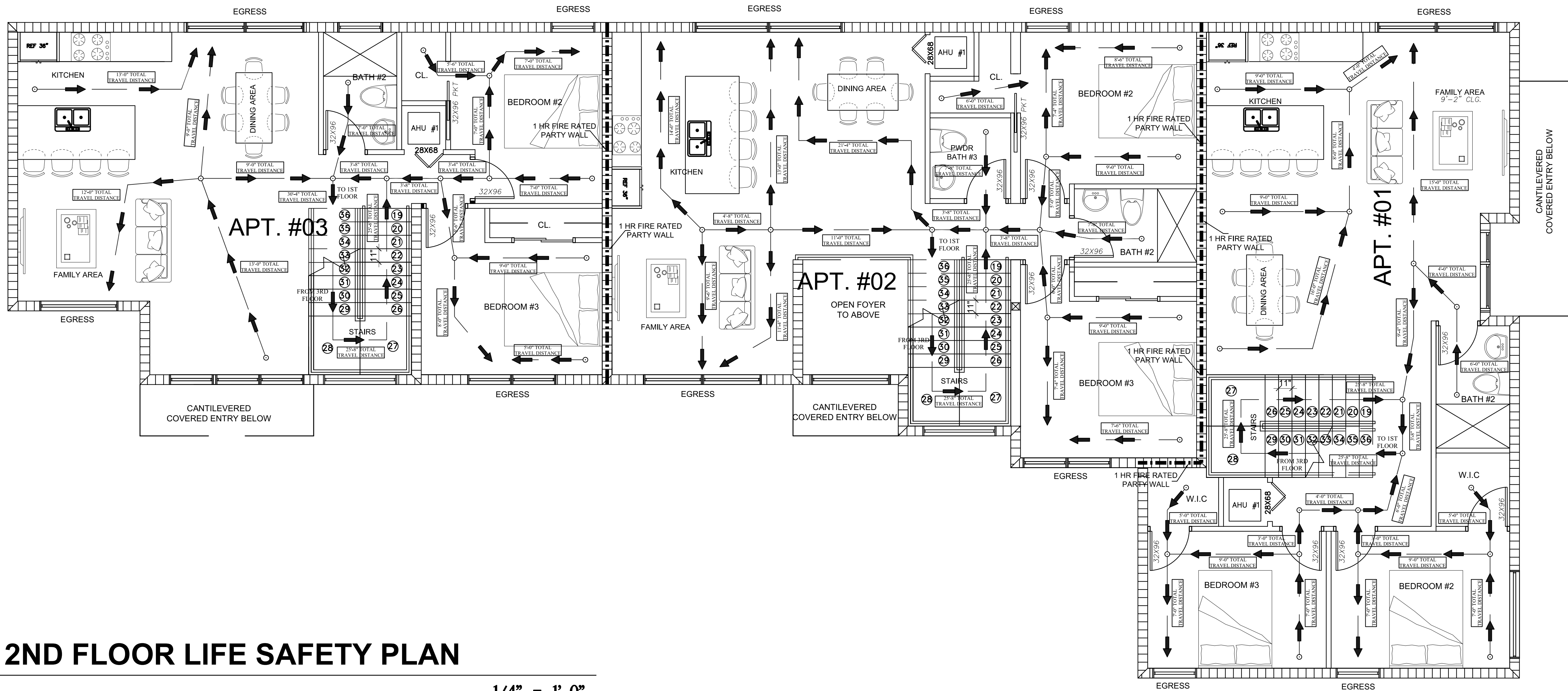
DATE 06/27/2023

DRAWN : REVIEW

SCALE

DRAWING TITLE:
**SECOND FLOOR
LIFE SAFETY PLAN**
SHEET No:

LS-2



2ND FLOOR LIFE SAFETY PLAN

1/4" = 1'-0"

LIFE SAFETY PLAN LEGEND

- DIRECTION OF EGRESS TRAVEL
- POINT OF EXIT DISCHARGE
- STARTING POINT OF TRAVEL DISTANCE
- TRAVEL DISTANCE TO REACH AN EXIT 200'-0" MAX TRAVEL DISTANCE

DESIGN CODES

- LIFE SAFETY NFPA LIFE SAFETY CODE 2020
- ACCESSIBILITY CODE FLORIDA BUILDING CODE ACCESSIBILITY 2020
- FIRE PREVENTION FIRE PREVENTION CODE - 2020 7TH EDITION OF NFPA 1 & NFPA 101 WITH FLORIDA AMENDMENTS & PALM BEACH COUNTY LOCAL AMENDMENTS

903.2.11.3 BUILDINGS THREE STORIES OR MORE IN HEIGHT ANY BUILDING WHICH IS OF THREE STORIES OR MORE IN HEIGHT SHALL BE EQUIPPED WITH AN APPROVED AUTOMATIC SPRINKLER SYSTEM INSTALLED IN ACCORDANCE WITH SECTION 903.1.

EXCEPTIONS:

- SINGLE- AND TWO-FAMILY DWELLINGS. A STAND-ALONE PARKING GARAGE CONSTRUCTED WITH NONCOMBUSTIBLE MATERIALS, THE DESIGN OF WHICH IS SUCH THAT ALL LEVELS OF THE GARAGE ARE UNIFORMLY OPEN TO THE ATMOSPHERE ON ALL SIDES WITH THE PERCENTAGES OF OPENINGS EQUAL TO OR GREATER THAN THOSE SPECIFIED IN SECTION 406.3. SUCH GARAGES SHALL BE SEPARATED FROM ANY OTHER STRUCTURE BY NOT LESS THAN 20 FEET (6096 MM).
- A STAND-ALONE PARKING GARAGE IS ONE THAT IS SOLELY FOR THE PARKING OF VEHICLES AND DOES NOT HAVE ANY OTHER OCCUPANCY GROUP IN THE BUILDING.
- TELECOMMUNICATION SPACES LOCATED WITHIN TELECOMMUNICATION BUILDINGS, IF THE SPACES ARE EQUIPPED TO MEET AN EQUIVALENT FIRE PREVENTION STANDARD APPROVED BY BOTH THE FLORIDA BUILDING COMMISSION AND THE STATE FIRE MARSHAL.
- TELECOMMUNICATIONS SPACES WITHIN TELECOMMUNICATION BUILDINGS, IF THE TELECOMMUNICATIONS SPACE IS EQUIPPED WITH:

NFPA 101 AS ADOPTED BY FLORIDA FIRE PREVENTION CODE, AS REGARDING THE REQUIREMENTS FOR FIRE PROTECTION SPRINKLERS, IS APPLICABLE TO ALL MULTIPLE-FAMILY RESIDENTIAL BUILDINGS, WHETHER DESIGNATED AS TOWNHOUSES, CONDOMINIUMS, APARTMENT HOUSES, TENEMENTS, GARDEN APARTMENT BY ANY OTHER NAME.